

Pneumatic Oil Extractor

HC-2285



INSTRUCTION & MAINTENANCE MANUAL



Read this entire manual carefully and completely before
installation or operation of the Pneumatic Oil Extractor

Safety Warnings and Precautions

WARNING: When using tool, basic safety precautions should always be followed to reduce the risk of personal injury and damage to equipment.

1. **Keep work area clean.** Cluttered areas invite injuries.
2. **Observe work area conditions.** Do not use machines or power tools in damp or wet locations. Don't expose to rain. Keep work area well lighted. Do not use electrically powered tools in the presence of flammable gases or liquids.
3. **Keep children away.** Children must never be allowed in the work area. Do not let them handle machines, tools or extension cords.
4. **Store idle equipment.** When not in use, tools must be stored in a dry location to inhibit rust. Always lock up tools and keep out of reach of children.
5. **Avoid Unintentional Starting.** Be sure the air pressure is in the off position when not in use and before making hose connection.
6. **Stay alert.** Watch what you are doing, use common sense. Do not operate any tool when you are tired.
7. **Check for damaged parts.** Before using any tool, any part that appears damaged should be carefully checked to determine that it would operate properly and perform its intended function. Check for alignment and binding of moving parts; any broken parts or mounting fixtures; and any other condition that may affect proper operation. Any part that is damaged should be properly repaired or replaced by a qualified technician. Do not use the tool if any control or switch does not operate properly.
8. **Replacement parts and accessories.** When servicing, use only identical replacement parts. Use of any other parts will void the warranty. Only use accessories intended for use with this tool.
9. **Do not operate tool if under the influence of alcohol or drugs.** Read warning labels if taking prescription medicine to determine if your judgment or reflexes are impaired while taking drugs. If there is any doubt, do not operate the tool.
10. **Maintenance.** For your safety, service and maintenance should be performed regularly by a qualified technician.

Note: Performance of this tool may vary depending on variations in air pressure and compressor capacity.

Product specific safety precautions

This equipment is designed be operated by qualified personnel. It should only be operated after reading and understanding the safety warnings and operating procedures in this instruction manual.

1. **Do not smoke near this equipment.**
2. **Firework is strictly prohibited during operation, keep away from heat, high voltage, flammable and explosive place**
3. **Use in a well ventilated area.**
4. **When leaks are found in the equipment or hoses, immediately turn the air pressure off and repair the leaks.**
5. **Once leakage is found in the hose or other components during operation, turn off air compressor immediately, conduct a detailed inspection and proceed with troubleshooting.**
6. **Do not exceed the recommended operating air pressure. This could damage equipment.**
7. **Keep a type ABC fire extinguisher nearby in case of fires.**



8. **Always protect your skin and eyes from contact with oil and solvents.**



9. **Do not start engine during the time of oil extraction. Otherwise it will cause the damage of extraction probes and injuries of people.**
10. **Be careful for the oil extracted out from the vehicle, as temperature of oil is high, always between 40~60°C**
11. **Used oil should be properly disposed or recycled. Please contact with your local waste liquid/solid authority for information on recycling.**

Product description:

1. Fast vacuum speed, capable of high negative pressure, multi-purpose equipment.
2. High quality cylinder, higher intensity, high grade of transparency as well as high temperature resistance (able to withstand 80°C & negative pressure without deforming). Transparent cylinder allows oil observation and measurement.
3. Use compressed air as power source; guarantee the safety in use, Eco friendly and low power consumption
4. Vacuum cylinder and oil tank at a same time, increase oil extraction speed
5. Different diameter of oil suction probes to meet the need of different type of cars
6. Can be used with other mechanical engine oil, lubricants as well as temporary storage. Brake fluid, gasoline, diesel and other liquid contains methanol and ketones or flammable is strictly prohibited.

Specification:

Functions: Remove and extract waste fluids or oil out from engine and etc. with flexible PVC tube and robust CU probe. Power from compressed air

Air Inlet Pressure::	6~8bar/ 87~116PSI
Ejection pressure:	0.7~1 bar/ 10~15PSI
Air consumption:	150L/MIN
Vacuum Degree:	0~-1 bar/-15PSI
Tank Capacity:	80L(21.1Gallon)
Oil tray volume:	15L
Working Temperature:	40~60℃
Package:	Oil tank/box
Carton size:	550*430*980mm
Oil extraction probe:	
Φ 5*L800mm,(Cu,1 PCS)	1.9 L/Min.
Φ 6*L800mm,(Cu,1 PCS)	3.7 L/Min.
Φ 5*L800mm,(PVC,1PCS)	1.0 L/Min.
Φ 6*L800mm,(PVC,1PCS)	2.0L/Min.
Φ 8*L800mm,(PVC,1PCS)	6.5 L/Min.
Φ 7*L1000mm,(PVC,1PCS)	3.7 L/Min.

Package Contents

Please inspect and look for damages from shipping when package is first received. If the unit is damaged in any way, please contact customer service and include pictures if possible.

In the package, you will find:

- a) English manual
- b) One Complete Oil Tank/Reservoir
- c) One Oil Collecting Bowl/tray
- d) One Strain
- e) Extension funnel 3pc/set
- f) Probes 6 pcs with sleeve
- g) BMW, Mercedes, Volkswagen connector

Operation Instruction

1. Vacuum Generation

Turn off all valves BEFORE use. Connect the air compressor to the air inlet(Part No.32HC-0801), gradually turn on the air inlet ball valve (Part No.32HC-0803)for vacuumization. When finger reaching to the MAX area on the vacuum gauge, turn off the air inlet valve for completion of vacuum extraction.

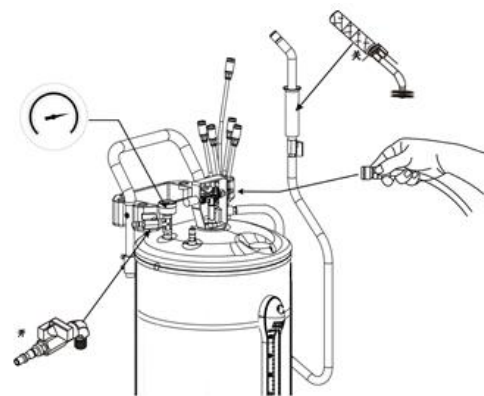


FIG.1

2. Extraction

Ensure the oil tank is under negative pressure, FIG.2 remove engine oil case, Choose suitable probe (which is the largest diameter one can be inserted into the engine) and tightly connect it to the extraction pipe connector, Insert the end of the probe into the engine oil inlet hole. FIG.4 Turn on the ball valve (Part No. 32HC-1703) for oil extraction.

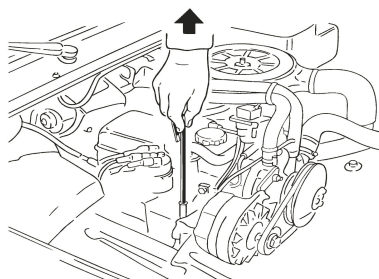


Fig.2

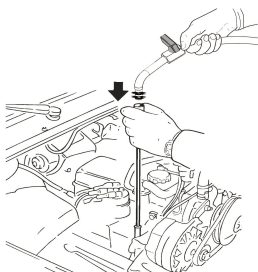


Fig.

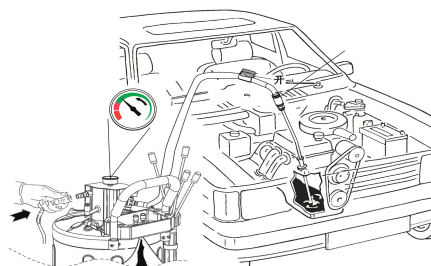


Fig.4

NOTICE:

Do not exceed maximum oil extraction temperature 60°C.

Hold the hose protection sheath during extraction to avoid scald

Place the machine in a flat ground to avoid sliding under working condition

Oil temperature higher than 80 ° C will cause seriously damage to the components, in worst case it could lead to machine failure.

3. Oil collection from oil tray

FIG.5 lift the vehicle up with workshop lift, move the oil extractor below car engine, oil tray position right under the vehicle oil drain hole. Release plum knob to adjust lifting pole , tighten plum knob (to fix its height, open ball valve under the oil tray , release oil drain bolt for oil collection from vehicle.

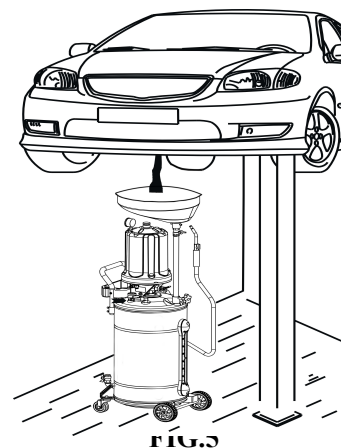


FIG.5

4. Tank Emptying

As FIG.8 shows oil level reached STOP sign, stop oil extraction

Immediate, turn off all valves for tank emptying. FIG..8 insert ejection

Hook into the external disposal tank, connect air compressor with

Air inlet (Part No.32HC-0801).Turn on air inlet valve (Part No.

32HC-0803) slowly, Adding tank pressure, turn off air inlet valve

(Part No.32HC-0803).(The valve will automatically release pressure

when the tank pressure reach 1.0 bar/14PSI, turn off the air compressor

immediately and quickly drop the tank pressure below 0.7bar/10PSI,

otherwise it could lead to serious incident. Turn on wing valve (Part No.

32HC-0402) for oil draining. Cut off air source.Empty tank pressure and

close all valve for completion.

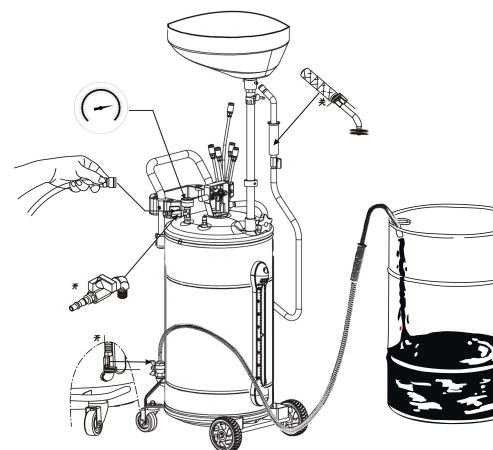


FIG. 6

As FIG. 7 shows, discharge Residual oil from Residual oil cup when it reach STOP sign

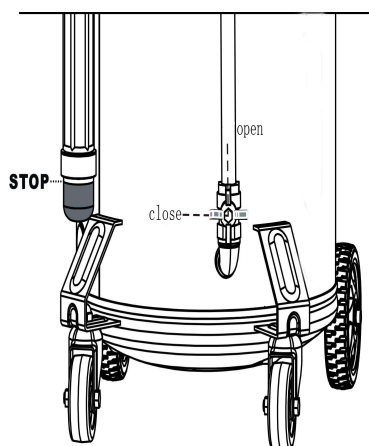


FIG. 7

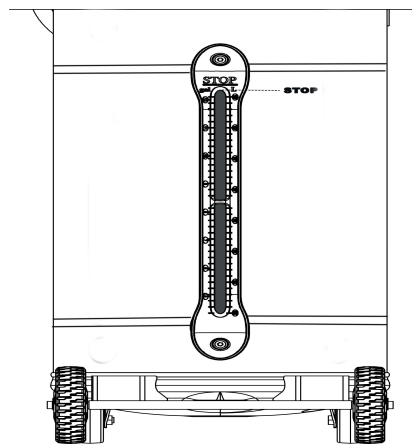
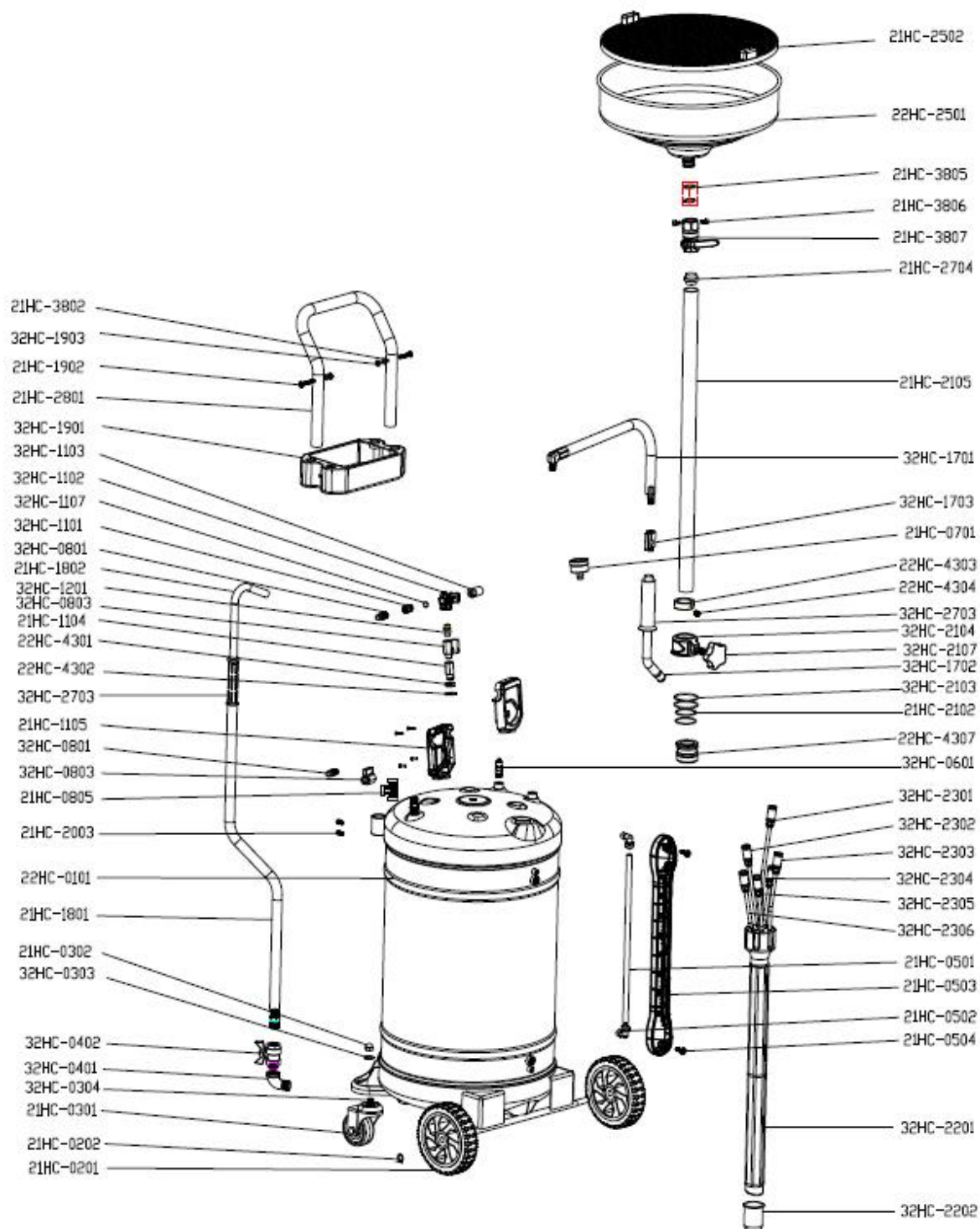


FIG. 8



BOM Part List

No.	name	qty	unit
22HC-0101	tank	1	pcs
21HC-0201	directional wheel	2	pcs
21HC-0202	snap ring	2	pcs
21HC-0301	universal wheel	2	pcs
21HC-0302	nut	2	pcs
21HC-0501	level pipe	0.4	m
21HC-0502	elbow connector	2	pcs
21HC-0503	level pipe protector	1	pcs
21HC-0504	hexagonal screw	2	pcs
21HC-0701	pressure gauge	1	pcs
21HC-0804	straight connector	1	pcs
21HC-1104	straight connector	1	pcs
21HC-1105	vacuum generator protector	1	pcs
21HC-1801	oil drain hose	2	m
21HC-1802	oil drain hook	1	pcs
21HC-1902	screw	2	pcs
21HC-2003	screw	2	pcs
21HC-2101	fixing seat	1	pcs
21HC-2102	seal ring	2	pcs
21HC-2105	lift pole	1	pcs
22HC-2501	oil tray	1	pcs
21HC-2502	strainer	1	pcs
21HC-2704	connector	1	pcs
21HC-2801	handrail	1	pcs
21HC-3802	gasket	2	pcs
32HC-0303	gasket	4	pcs
32HC-0304	thread rod	2	pcs
32HC-0401	cast-iron bend	3	pcs
32HC-0402	butterfly valve	1	pcs
32HC-0601	safe valve	1	pcs
32HC-0801	wind nozzle	2	pcs
21HC-0805	T connector	1	pcs
32HC-0803	mini ball valve	1	pcs
32HC-1101	Bolt	1	pcs
32HC-1102	vacuum generator	1	pcs
32HC-1103	silencer	1	pcs
32HC-1107	seal ring	1	pcs
32HC-1201	bead valve	1	set

32HC-1701	extraction oil hose	2	m
32HC-1702	oil extraction hook	1	pcs
32HC-1703	mini ball valve	1	pcs
32HC-1704	seal ring	2	pcs
32HC-1901	tool box	1	pcs
32HC-1903	nut	2	pcs
32HC-2103	seal ring	2	pcs
32HC-2104	brake sleeve	1	pcs
32HC-2107	knob	1	pcs
32HC-2201	probe sleeve	1	pcs
32HC-2202	oil cup	1	pcs
32HC-2301	oil extraction probe	1	pcs
32HC-2302	oil extraction probe	1	pcs
32HC-2303	oil extraction probe	1	pcs
32HC-2304	oil extraction probe	1	pcs
32HC-2305	oil extraction probe	1	pcs
32HC-2306	oil extraction probe	1	pcs
32HC-2703	handle sleeve	2	pcs
22HC-4301	hex nut	1	pcs
22HC-4302	gasket	1	pcs
22HC-4303	locating sleeve	1	pcs
22HC-4304	hex socket set screw	1	pcs
22HC-4307	lift	1	pcs
21HC-3805	seal ring	1	pcs
21HC-3806	screw	1	pcs
21HC-3807	ball valve	1	pcs